

BS 060

POWER COUPLING PORTABLE BORING MACHINE



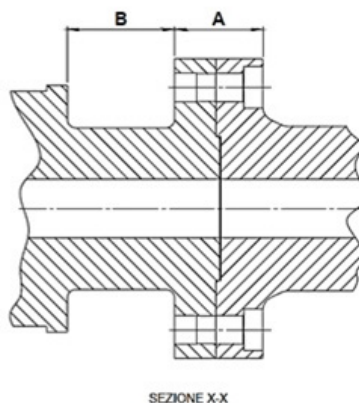
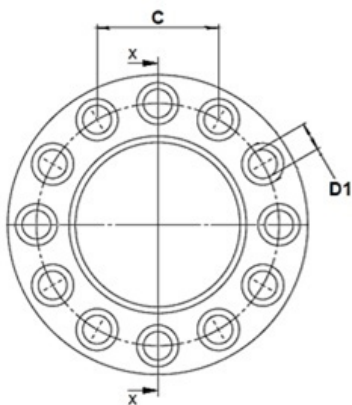
Boring bar that performs boring cycles and boring cycles on reduced dimensions.

Main features:

- Integrated feed
- Single drive that combines feed and rotation in one solution
- Adjustment of machine supports to existing holes
- Possibility of mounting the gearmotor-side support close to the gearbox in order to have the smallest possible footprint at installation (dimension (B) in the overall dimensions)
- Pivoting supports to ensure precise centring

TECHNICAL DATA

Maximum working stroke:	510 mm
Min working diameter without accessories:	80 mm
Max working diameter without accessories:	110 mm
Max working diameter with accessories:	600 mm
Diameter of tool holder to be mounted:	8 mm
Tool feed speed:	0,08 mm/round
Maximum bar rotation speed:	150 round/min



DETAIL OF JOINT DIMENSIONS

\varnothing min	Maximum boring stroke	Min. installation space (at maximum boring stroke)	Centre distance Anchorage
(D1) [mm]	(A) [mm]	(B) [mm]	(C) [mm]
80	535	255	157-521

BS 060

POWER COUPLING PORTABLE
BORING MACHINE



DIMENSION DETAILS

